



Champaign County Farm Bureau News

Vol. 93, No. 10 801 N. Country Fair Drive, Suite A, Champaign, IL 61821 October, 2015

“Champaign County Farm Bureau will strive to assist families in agriculture by recognizing and responding to issues of concern while strengthening partnerships and improving farm family life for this and future generations.”

Meet Kirk Buita, CCFB Foundation Director

By Lesley Gooding



hope to see many CCFB members, and others interested in these important causes, in attendance. We have a full list of unique live auction items ready for the auction and our board members are currently collecting silent auction items. We're planning a few other surprises and I know that this year's Gala will be one you won't want to miss it!

Welcome back to a familiar face around the Champaign County Farm Bureau office, Kirk Buita. Kirk is taking over the helm of the Champaign County Farm Bureau Foundation as Director from retiring director Larry Wood. Kirk is no stranger to the Farm Bureau. He is a long time volunteer and former CCFB Assistant Manager. CCFB: You are starting your new job at a busy time. The Foundation's Gala is right around the corner on November 20, planning is in full swing. How is the 2015 event shaping up? Can you give us an update about the event and why it is important to attend?

Kirk: All of us in Agriculture are concerned about the future of our industry. This is why the two primary functions of the Champaign County Farm Bureau Foundation are to deliver Ag Literacy programs through our Earth Partners curriculum, and provide Champaign County students scholarships to attend college in an agricultural field. This year's Harvest Gala supports both of these causes.

Planning for the 8th annual Harvest Gala is in full swing and we

CCFB: What are the biggest challenge's facing the Foundation in the next few years?

Kirk: Our Foundation Board has a lot to be proud of! Over the past year we've welcomed an exceptional group of new Foundation Scholars, each receiving a \$1,000 scholarship to help defray the ever increasing cost of education; while our Earth Partners programs have touched over 9,000 local elementary school students.

Today's average college graduate begins their career with a high amount of educational debt. Over the next few years we will be challenged by the growing number of students seeking assistance from our scholarship program. The needs of our local scholars are increasing and we will do our best to help students throughout Champaign County realize their dream of a college education.

Continue Buita on pg. 3.....

INVEST AN ACRE

Helping the Eastern Illinois Food Bank is easy with their new program "Invest An Acre". The process is taken care of by your local elevator. When you go to dump grain, just tell them how many bushels you would like to donate to the cause. For every \$100, Monsanto is matching with another \$100. Participating elevators: Anderson's, Premier Cooperative and Cargill.

JOIN US! October 28th

*Know Your GMOs
With Nutrition Specialist
Leia Kedem*

The Champaign County Farm Bureau Women's Committee invites women of all ages to learn more about GMOs!

The CCFB Women's Committee invites you and your friends, family or neighbors to an evening of GMO education.

Paula Zwilling has lined up a speaker for the evening, Leia Kedem, a University of Illinois Extension Nutritionist.

“We are hoping to reach out to our urban counterparts, as well as our members, with a presentation of the whats, whys and hows of GMOs, followed by a question and answer session”, says Zwilling.

Zwilling said, “This topic is such a hot button topic right now and there is a lot of misinformation out there about GMOs.” “We are hoping to give ladies the basics so they can be better informed about genetic engineering and walk away feeling comfortable in talking about GMOs to their friends and acquaintances”, says Zwilling.

The presentation will be a great event to tie into the theme of health awareness - a theme that the women created to better inform their membership and gain an understanding about healthier life styles and prevention.

The event will take place on Wednesday, October 28th at 6:30p.m.

- The topics that will be covered include:
- The basics of GMOs
 - Consumption and labeling of GMOs
 - GM food crops & nutrition

Please RSVP by October 23rd to CCFB@ccfarmbureau.com or call: 352-5235
CALL NOW! SPACE IS LIMITED!



Have You Signed?

The Illinois Farm Bureau (IFB) and the Champaign County Farm Bureau (CCFB) are supporting the Independent Map Amendment coalition, a group seeking an Illinois constitutional amendment to change the way state legislative districts are drawn.

CCFB Past President Lin Warfel points out three key differences regarding the current push to pass the Independent Map Amendment versus past attempts:

1. The Illinois Farm Bureau Legal team has studied this proposition carefully and believes this amendment can pass legal muster as opposed to past attempts.
2. A group of high profile lawyers, astute with constitutional law, went over the amendment with a fine tooth comb. These lawyers studied every detail and find it to be in compliance with the constitution. It will be tested, but it can pass!
3. The Federal Supreme Court passed and approved a similar amendment in Arizona. Illinois has studied the Arizona amendment and it has given Illinois strength with the submittal. “We are delighted the Illinois Farm Bureau has joined the fight for fairness in the redistricting process,” said Dennis FitzSimons, Chair of Independent Maps. “Illinois farm families want a fair shake in Springfield and understand that the current way state legislative districts are drawn makes that more difficult. Last November, only one candidate was on the ballot in 60 percent of legislative elections.

Continue MAPS on pg 3.....

Send address changes to: CCFB News, 801 N Country Fair Dr., Champaign, IL 61821



HAUL IN A WINNER!



2015 FORD F-150 GO»



October is the last month for the F 150 Sweepstakes

*Help your community today! Invest An Acre
and make the difference. Eastern Illinois
Food Bank is accepting bushels to be
donated for money at: Premier Cooperative,
Anderson's and Cargill.
Call today! 352-5235
Champaign County Farm Bureau*



Illinois Farm Bureau® Member Photo Contest

*Entries accepted
June 1 - November 1, 2015*

For entry information
and contest rules visit
Ken Kashian's Gallery
at www.ilfbphotos.org
or contact Dawn at 309-557-2293
or dheggie@ilfb.org



**ILLINOIS
FARM
BUREAU.**

Farm. Family. Food.™

***I-PAD / I-PHONE
WORKSHOP SET FOR
November 4th!***

PRIDE*Plus*


means the *pride* of Farm Bureau® membership plus exclusive members-only savings.

IFB® MEMBERS SAVE 20% AT

Choice Hotels®


Enjoy the Extras

TO LEARN MORE: VISIT WWW.IFB.ORG/MEMBER



“Check Your Calendar!”

October



8	Prime Timers	10a.m.
23	Deadline to RSVP for “Know Your GMOs	
28	Know Your GMOs	6:30p.m.-8p.m.

*Note: Most Committees do **NOT** meet in October - Have a SAFE harvest season!!!*

November

4	Women’s Committee iDevice Workshop	6p.m.-8p.m.
5	Young Ag Leaders	6:30 p.m.
9	Women’s Committee	9 a.m.
12	Prime Timers	10 a.m.
17	Legislative Committee	7:30 a.m.
19	Full Board	6:30 p.m.
20	HARVEST SCHOLARSHIP GALA	6 p.m.
26, 27	Happy Thanksgiving - Offices Closed	

October President's Report

9/28/15

How much can happen in one month? September proved to be an extremely busy month for Farm Bureau. The month kicked off with Farm Progress

Show at Decatur. Illinois Farm Bureau kicked off their Centennial celebration of the organization with a special display and a photo opportunity for members as they came through the show. Activities to celebrate the 100 year event will continue through much of next year as 2016 marks the IFB Centennial and we will make you aware of opportunities to share in this momentous event.

Ag Education had a big month with the 20th and Final Ag In The Classroom Bike Ride Fundraiser being hosted by Champaign County for the 3rd time in the program's history. We were thankful for the opportunity to play such a large role in this particular fundraiser to support Ag Education over the years as the Bike Ride sunsets and the pursuit of other Fund Raising Event opportunities are explored. The Event raised in excess of \$40,000 to support Ag In The Classroom programs around the state. Locally, Earth Partners had their first of 2 weeks of Programs at Parkland to educate 3rd graders from Champaign Unit 4 Schools about various aspects of Agriculture in Champaign County. Special thanks go out to all who had a part in these educational events to support Agricultural Education.

We continue to have challenges the state level as we operate without a budget. Thanks go out to Senator Chapin Rose for attending our September Legislative meeting and sharing his perspective of what is currently happening or not happening in Springfield. Other aspects where these challenges are becoming evident is in the announcement of potential reduction in Activities at U of I Ag Research Stations around the State and the loss of Insurance Coverage funded by the State to support Soil And Water Conservation Districts and employees. The gravity of this situation was made evident in last week's announcement that Illinois Director of Agriculture Phillip Nelson was resigning from that post after only 8 months in office. For any of you that have come in contact with Mr. Nelson as he was IFB President for 10 years, this gives an indication of the severity of the paralysis at the State level and the struggle to facilitate positive change in a very challenging political environment.

In reference to National Farm Safety week, we unfortunately had at least three different accidents that I was made aware within the county during the week. We are thankful though that no life threatening injuries we sustained in any of these events. The occurrences do prompt us to once again think about safety in everything that we do.

On a more positive note, know that as we are experiencing a more bountiful harvest than we expected, there is an opportunity to share some of that bounty. Invest an Acre is a program to support Eastern Illinois Food Bank through the contribution of bushels at your local elevator. The private contributions are also being matched by a corporate sponsor to make the program's benefits go further.

Consult your local elevator or CCFB office for details to get involved. I would like to close in thanking the CCFB board for their continued diligence and commitment in serving this county. It is reaffirming to witness dedication to public service at a time when we are witnessing extreme challenge in public service and government at the State Level.

- Eric Suits

MEMBER SPECIAL



SPORTSMAN



BRUTUS



GEM

FARM BUREAU MEMBERS WILL RECEIVE:

\$200 OFF

all full size Sportsman® ATVs and ACE™ vehicles.

\$300 OFF

all full size RANGER® RZR® and Brutus® UTV's.

\$300 OFF

all GEM® electric vehicles.



POLARIS®

Learn more about models at Polaris.com.



ILLINOIS FARM BUREAU.
Farm. Family. Food.™

CCFB: Do you anticipate any major changes? New events? Funding more scholarship?

Kirk: The Foundation board of directors hopes to grow both the Earth Partners and scholarship programs in the years ahead. To accomplish this we will need to be creative in making changes to current fundraising events while possibly establishing new programs. It's our goal to keep our programs fresh and exciting while increasing our ability to meet the demands of our scholarship recipients and Earth Partners initiatives.

CCFB: What would you like to accomplish as Director by this time next year?

Kirk: 2016 will mark the 30th Anniversary of the Champaign County Farm Bureau Foundation. I hope that as we mark this special occasion we are able to reconnect with past recipients in order to gauge the impact the Foundation has had over the past three decades while strengthening our ability to assist many more scholars in the future.

CCFB: We want the CCFB Membership to get to know you a little better. Can you give us a few fun facts about yourself that we might not know?

I'm an Illinois athletics fan and follow the Illini men's basketball team closely. I also follow the St. Louis Cardinals and Indy Car Racing having attended the Indianapolis 500 for over 20 years. Although I have absolutely no musical ability, if you stop by my office I'll most likely have the radio turned up - typically to a country station. I also enjoy traveling, taking time to explore new places and finding great local food.

Unity FFA Teaching Farm Safety



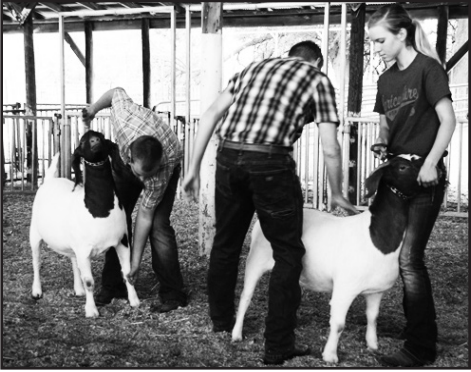
Jack Gady of the Unity FFA Chapter shows Unity West Elementary students the dangers of not wearing a helmet by dropping a melon on the parking lot.

Unity FFA students in cooperation with Carle put on an ag safety day for students at Unity West. FFA members taught students ATV safety and disability awareness. Students learned proper safety gear to wear while riding ATVs. In the disability group, students experienced some of the difficulties people experience when they are involved in accidents. Students learned what it is like to have missing fingers and limited vision.

The Unity FFA Chapter Feature

The FFA Fair

by Mikayla Wetherell
On July 1st, eight Unity FFA chapter members exhibited their Supervised Agriculture Experience (SAE) projects at the Melvin County Fair grounds for the Section 17 FFA fair. Students must maintain accurate records of project to exhibit at the fair. There are many options available for SAE projects, this year the following Unity FFA members exhibited at the Section 17 FFA fair: Lindsey Decker, Cattle and Garden; Doug Hughes, swine; Calli Robinson, garden; Ryan Miller, rabbits; Michael Wetherell, Boer goats and poultry; Mikayla Wetherell, Boer goats and poultry; Dylan Terven, ag mechanics - welding and ag education; and Leah Gateley, garden and horticulture. The following students received best of show in their respected areas: Lindsey Decker, Doug Hughes, Calli Robinson, Dylan Terven, and Michael Wetherell. Through these SAE projects, students apply what they have learned in the classroom as they prepare to transition to college and explore career opportunities.



Michael Wetherell and Mikayla Wetherell showing Boer goats



Lindsey Decker posing with her heifer at the Section 17 FFA Fair



Calli Robinson and Leah Gateley at the Section 17 FFA Fair



Robert Decker of the Unity FFA Chapter tapes down his thumb and shows students how difficult it is to button up a shirt after a farm accident.

Continued MAPS from pg. 1.....
Voters deserve better:
Elections with choices, where issues are debated and candidates listen to their constituents.”

The proposed constitutional amendment would create an 11-member independent redistricting commission to draw legislative districts for General Assembly members. The commissioners would be selected at the same time of each federal decennial census, with the first commission appointed in 2021.

Champaign County Farm Bureau members can expect to see CCFB Legislative Committee members and other CCFB Board Members in the community asking registered voters to sign a petition in favor of redrawing legislative districts by an independent commission. The coalition’s goal is to gather 600,000 signatures of registered voters by April 2016. The Illinois Constitution requires that any petition seeking to amend the Legislative Article of the Illinois Constitution gather at least 290,216 valid, registered voter signatures.

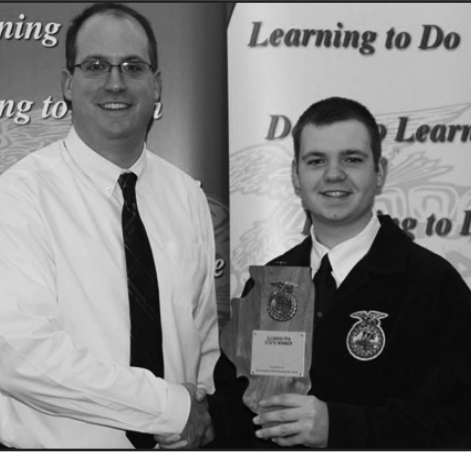
Signatures will be checked against voter registration cards!

IMPORTANT: When signing the petition

- Sign EXACTLY as your name appears on your voter registration card
- Do not abbreviate
- Spell EVERYTHING out including County Road, Street, etc

3 Ways to Show Our Support

- You can sign petitions at the office
- Documents can be notarized and collected at office
- We can make you copies at the office



Local Area Student Wins State FFA Proficiency Award

Michael Wetherell of Tolono graduated this past May 2015 from Unity High School and was a member of the Unity High School FFA Chapter. This past spring he was named the State FFA Proficiency Winner in the goat production area. Michael Wetherell competed this past summer at the National level and received a bronze level award.

FFA recognizes students in 52 different areas based on their work based learning, known as Supervised Agriculture Experiences or SAE. FFA members compete against others in their SAE project and if selected advance to the next level of competition. Those levels of competition consist of the section, district, state, and then national level. FFA members who demonstrate outstanding agricultural skills and competencies through leadership and record keeping may



Champaign County Farm Bureau

801 N Country Fair Dr
Champaign, IL 61821

Phone: 217-352-5235

www.ccfarmbureau.com



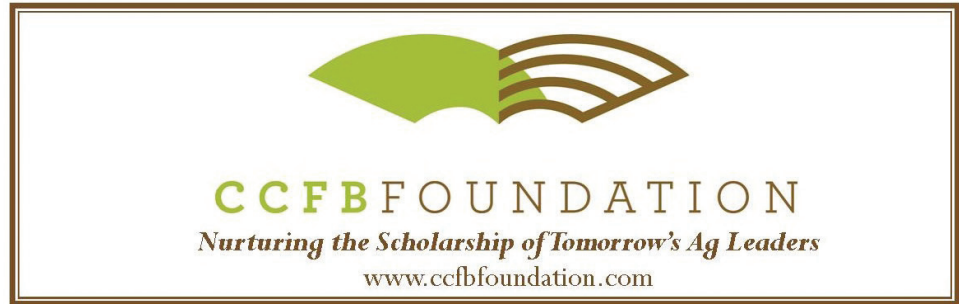
Follow CCFB on Facebook, Twitter and Instagram!

Champaign County Farm Bureau Communications Director, Lesley Gooding is asking CCFB members to send her pictures of members working around their farms, getting ready for harvest, family fun events or anything else! This request is being made to fulfill our website photo blog!

be considered for this award. FFA members must submit records, skill checklists, photos, and other materials for judging. At each level the student stands in front a panel of judges and explains and answers questions concerning their SAE project. SAEs allow students to learn by either owning or operating an agricultural business, working or serving an internship at an agriculture based business or conducting an agriculture based scientific experiment and reporting results.

The State FFA Awards selection process took place in Urbana-Champaign on March 28. Winning at the state level Michael received a monetary amount for filling out and submitting the national application, a plaque, and a scholarship to the University of Illinois. Rich McCabe is the agriculture teacher and FFA Advisor at Unity.

Michael Wetherell is a freshman this fall and is in the Parkland College Pathways to Illinois program and is majoring in Animal Science with a focus in genetics and animal breeding. His career choice came from his four years in FFA and working and learning in his goat proficiency area. Michael is the son of Deric and Sheila Wetherell of rural Tolono.



8th Annual Harvest Gala to Support Scholarship, Earth Partners

Each year the Champaign County Farm Bureau Foundation is able to provide educational opportunities for the next generation of Ag leaders. Whether they be college students achieving their dream of a college education, or elementary school students learning of agriculture's role in their daily lives; the foundation plays an integral part in cultivating the future of our industry through scholarship and Earth Partners Ag Literacy programs.

To realize this great impact, the Foundation will host its 8th Annual Harvest Gala on Friday, November 20th at Pear Tree Estate, Champaign.

old favorites such as the live and silent auctions including many new items to our 8th annual Gala. Come ready to bid on exceptional trips such as a 7 night stay at your choice of five Villa del Palmar locations as part of our Mexico Excursion package. Or, if a relaxing week of fishing is more your speed, then you'll enjoy our trip to northern Wisconsin in a large lakeside cabin. Our live and silent auction lineup is set with a great list of unique experiences and items sure to get your bid card in the air. Have a sweet tooth? Then how could we forget the fresh homemade desserts made by our local celebrity chef's - the members of the Champaign County Farm Bureau Women's Committee!

regularly on our Facebook page at www.facebook.com/ccfbfoundation.

New to this year's Harvest Gala is the opportunity to support our Earth Partners Ag Literacy programming through the Wishing Wall; an area designed to make an immediate impact on upcoming Earth Partners activities and children's programs throughout Champaign County.

Tickets for the November 20th event are on sale today at the Champaign County Farm Bureau office and you won't want to miss out. Tickets are \$45 in advance, or \$55 at the door. Ticket includes a cocktail reception and silent auction beginning at 5:30 P.M. followed by a harvest dinner prepared by LA Gourmet at 7:00 P.M. At 7:30 the live auction begins with our dessert auction.

Finally, the night will end with the drawing of our cash raffle. Tickets for the raffle can be purchased the night of the event or at the Farm Bureau office for \$20 each or 6 for \$100. You don't have to be present to win one of three cash prizes in the amount of \$1,000, \$500 or \$250.



Kirk Builta,
Foundation Executive Director

Harvest Gala
Friday, November 20th

Pear Tree Estate
2150 County Rd 1000 E,
Champaign, IL 61822

5:30p.m. Silent Auction & Cocktail
7:00p.m. Dinner by LA Gourmet
7:30p.m. Auction

The Foundation prides itself in providing opportunities in education that impact the future of the food and agriculture industry. With your support of our 8th annual Harvest Gala, the Foundation will continue to provide Ag literacy programs in our schools, while helping local scholars defray the cost of their education. With these programs we can ensure that the next generation of agriculturists are prepared to lead our industry.

This year's event will consist of

Admission:

Tickets:	Quantity	@ \$45 each	Total
Names			

Cash Raffle

Tickets:	Quantity	@ \$20 each	Total
	Quantity	@ 6/\$100	Total



Connecting Food to the Farm

By: Myla Munro

Working in conjunction with Champaign Unit 4's Curriculum Coordinator, the Champaign County Soil and Water Conservation District and Parkland College, Earth Partners hosted 12 district schools last month. This event impacts over 900 3rd grade students, 40 teachers and multiple chaperones over the course of two days and educates them about agriculture, farming and conservation.

The groups of students rotate through nine stations to learn more about: tillage and conservation practices, rainfall simulator, tractors, planting and spraying, combines and technology, corn and shelling, grain distribution, soils and end products.

We utilize more than 48 volunteers to help educate the students and teachers. This year's volunteers included: local farmers, Parkland College staff and students, Fisher FFA Officer Team, multiple agri-

business professionals, as well as Champaign County Farm Bureau and Foundation board members.

After visiting Parkland College and gaining this agricultural knowledge, teachers will refer back to this information in the classroom in October during a unit called, What Is On My Plate?. Throughout the unit, students will be asked to think critically and ask questions about where the food they eat comes from?

They will also look more closely at soil composition, observe particles by size and also develop a model soil profile. Teachers will also seek to broaden the student's level of understanding by comparing monocot and dicot seedlings. The students also read about technology on the farm and make an illustration of a piece of farm equipment that also includes how a farmer uses it on the farm.



Luke Zwilling educating about harvesting corn with a combine



Dan Schaefer explains tillage and conservation practices



Earth Partners Director
Myla Munro



Gerald Henry demonstrates how to shell corn with local youth.



Kent Krukewitt shares with local youth how to load a planter!

THANK YOU VOLUNTEERS FOR ALL OF YOUR HELP!



Vann Parkin
Country Financial Agency Manager



FINANCIAL

AUTO | HOME | LIFE | BUSINESS | RETIREMENT



Marcia Woolcott
COUNTRY Financial Agency Assistant
352-0012



Craig Voigt
217-328-0023



Scott Jackson
217-359-9335



Bret Kroencke
217-359-9391



Jessie DeHaan
217-352-3466



Aaron Wheeler
217-586-6170



Jim Nelson
217-892-4479

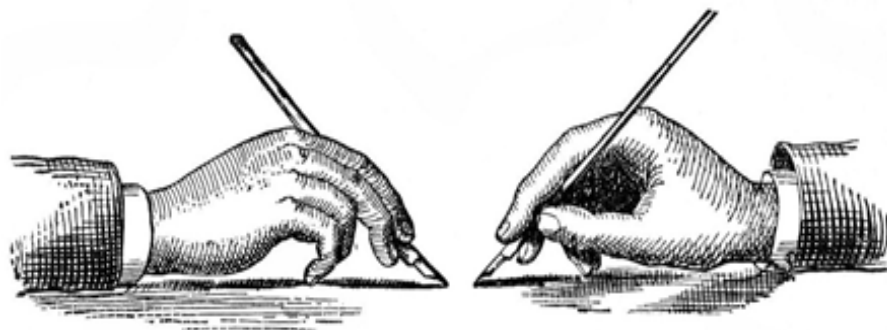


Stan Ochs
217-352-3296



A PROFESSIONAL CORPORATION

GOT A WILL?



- They Say I Need a Will; what are the next steps?
- What happens if I die without a Will?

Join us for a FREE informational workshop to answer these questions

Date: Thursday, October 29, 2015
Time: 6:00 p.m.-7:30 p.m.
Place: Champaign County Farm Bureau Auditorium
801 N. Country Fair Dr., Champaign, IL

Please RSVP to your COUNTRY Financial Representative
Or call Vann Parkin at 217-352-0012

Presented by Brooke Didier Starks
www.meyercapel.com/brooke-starks
Follow me on Twitter: @IL_estateplanner

Hosted by COUNTRY Financial



AUTO | HOME | LIFE | BUSINESS | RETIREMENT

No purchase necessary. COUNTRY Financial and its representatives do not adopt or endorse the views or opinions of any third party speaker or advisors, nor is COUNTRY Financial affiliated with any third party provider. 0915-236



Terry Hill
217-469-9800



Steve Derry
217-352-2655



Chuck Rippy
217-586-5030



Dan Duitsman
217-469-2033



John May
217-352-3341



Nathan Hubbard
217-892-4479



Brian Lowry
217-352-0186



Travis Heath
217-688-2900



Chris Greenwold
217-355-8675



Keith Garrett
217-485-3010



ILLINI FS

GROWMARK Growing Forward

OSHA Process Safety Management for Anhydrous Ammonia Storage Tanks

GROWMARK is working closely with state and national associations to either extend the proposed six month deadline for compliance with the Process Safety Management (PSM) standards for anhydrous ammonia storage tanks or see that Congress can pass a provision to restore the exemption from PSM regulations as retailers held since 1992.

GROWMARK and associations have held conversations with Congressmen discussing possible actions. In the meantime, GROWMARK's Environmental, Safety, and Insurance Services team sent this communication on training and assistance plans for PSM.

At the same time the federal PSM exemption was repealed, the Illinois Department of Agriculture is working to update the rules for anhydrous ammonia storage and use. GROWMARK requested in their comments that implementation of the proposed changes for the Illinois regulations be delayed until December 31, 2020, to allow time for retailers to address the PSM issue. That rulemaking process (including the implementation timeline for the proposed Illinois rules) has yet to be finalized.

Ag Coalition Sends Letter of Support for Highway Bill

A coalition of 28 agricultural organizations recently sent a letter to the U.S. House of Representatives in support of a highway bill. The group strongly urges the passage of multi-year surface transportation legislation that would provide adequate funding and greater certainty for infrastructure projects currently on hold.

GROWMARK continues to work with our national associations to address some of the challenges our industry continues to face, especially as it relates to transportation.

September 11, 2015

NCFC Upcoming Event to Discuss GMO Labeling Legislation

On October 7, the National Council of Farmer Cooperatives (NCFC) will be hosting a fly-In to discuss Genetically Modified Organism (GMO) labeling legislation with members of the U.S. Senate. GROWMARK will participate in the event representing Illinois

agriculture.

The Safe and Accurate Food Labeling Act of 2015, H.R. 1599, passed the House in July and has been sent to the Senate. Senator John Hoeven (R-ND) is drafting legislation and plans to introduce his companion bill to the House legislation this fall supporting a federal preemption of state GMO labeling efforts.

GROWMARK supports establishing a voluntary federal food labeling standard for genetically modified ingredients to avoid a state-by-state patchwork of regulations. Click here to view GROWMARK's fact sheet on H.R. 1599.

4R Code of Practice Launched by IFCA

The Illinois Fertilizer and Chemical Association (IFCA) has launched their 4R Code of Practice to minimize environmental impact, optimize harvest yield, and maximize input utilization. The concept of the 4R system is to apply and/or recommend the right source of nutrient, at the right rate, at the right time, and in the right place for customer's fields. IFCA is asking their retail members and crop advisers to "take the pledge" to support the principles in the 4R Code of Practice with their farmer customers.

On the new IFCA Keep it 4R Crop website, you can obtain additional information, review the principles of the 4R Code of Practice, and sign up to take the pledge. All companies who take the pledge

will be visible on the website.



Illini FS Ag Financing Programs 2015

By Lesley Gooding

Looking for an Agri-Finance program to fit your needs? Vonnie Davis, Illini FS, is here to work with you. Vonnie is an East Central Illinois native, born and raised in Edgar County on a grain and livestock farm. Vonnie continues to

live in Edgar County and covers the Illini FS, five county area, working with the agriculture industry to provide financing.

According to Vonnie, "Agri-Finance is a program that allows Illini FS to finance the products and services that we offer. It allows farmers to prepay for products and not pay for them until they sell that year's grain."

Several financing options are available to Illini FS customers.

- Cash rent and discretionary financing is available, so in most cases, the customer would not necessarily need an operating line at the bank.

- Take part in a reward program called "The Dollar per Acre" program which rewards loyal customers by buying down their interest rate by 1%-2% when they reach qualifying levels.

- A 0% Seed Program is available right now. This program runs from August 1, 2015 to December 1, 2015. Seed that is ordered will be at 0% until February 25, 2016, and then the loan can be paid by the customer, rolled to an interest bearing seed loan (4.75%) or rolled to a full-line loan (at approved rate). Both of those loans will mature March 1, 2017. So the seed doesn't have to be paid for until the grain is sold.

- Energy programs are available for those who purchase fuel, LP, tires, oils and lubricants and purchases at our Fuel 24 locations. These items can also be included in the full-line loan that covers all farm products and services. The variable rate for fuel loans is currently at 5.75%.

- Illini FS does have fixed rate financing for structures (grain bins and buildings) in the form of a loan or leasing options are also offered.

- Illini FS can provide leases for farm and commercial customers on buildings and grain bins purchased through the Illini FS Construction Services department. Leases can also be written for new or used farm equipment purchased other places from individuals and dealers. With a lease, the payment is 100% tax deductible.

Financing programs are another way that Illini FS is trying to better serve their customers. For more information please contact Vonnie Davis at 217-722-7219 or

email vdavis@illinifs.com.



Mike Turner
General Manager



Matt Hoose

Agronomy Update

Illini FS is gearing up for a busy harvest season. Toolbars are being installed on equipment and dryboxes are being put on machinery. Farmers are out cutting beans that are ready and switching back and forth to corn.

Matt Hoose, Illini FS Crop Insurance Specialist, has been visiting with clients in the field and has seen really spotty yields - really good yields to not so good yields. Matt said one client has "a variability of almost 80 bushels an acre in fields that are within 3 miles of each other." According to Matt, "Stalk quality remains to be a top concern. Stalks spread with fungicide seem to be holding up great. We are suggesting that if you didn't get your corn spread with fungicide to go out and get your crops as soon as you can. If we get a wet snap, stalks could start to go."

Have a safe harvest!

Precision Ag

The Illini FS Precision Farming department offers a wide range of services to our customers. Our goal is to offer services that provide you with quality information to assist in your crop production decisions. Whether its soil testing and soil analysis, Variable Rate recommendations, or yield analysis and data management, we're here to help. Please contact our Precision Farming department or your local Illini FS crop specialist with questions.

Contact info

Illini FS Precision Farming
217-693-5957

Email: precisionag@illinifs.com

KNOW YOUR GMOs

WITH NUTRITION SPECIALIST LEIA KEDEM

The Champaign County Farm Bureau Women's Committee invites women of all ages to learn more about GMOs!

Topics covered include

- The Basics of GMOs
- Consumption & Labeling of GMOs
- GM food crops & nutrition

Wednesday, October 28, 2015

6:30-8 p.m.

Champaign County Farm Bureau Auditorium

RSVP by October 23 to

CCFB@ccfarmbureau.com or 352-5235

CALL NOW! SPACE IS LIMITED!



Champaign County
Farm Bureau

801 N Country Fair Dr
Champaign, IL 61821

Phone: 217-352-5235
www.ccfarmbureau.com



REGISTER FOR YOUR CHANCE
TO WIN AN ILLINOIS FARM BUREAU

CENTENNIAL COMMEMORATIVE SPOON

Register at:
www.ilfb.org/100years



NO PURCHASE NECESSARY. Open only to Illinois Farm Bureau (IFB) members age 18 or older. Void where prohibited by law. The odds of winning are dependent upon the number of entries received. Illinois Farm Bureau employees and their immediate families are ineligible. One entry per person. Sponsor: Illinois Agricultural Association, 1701 Towanda Ave., Bloomington, IL 61701

M&M's



Illinois Farm Bureau is celebrating
their 100th Year!



ACTIVATOR attendees enjoying some appetizers in support of the evening fundraiser held at the Hettinger Farm



Champaign County Farm Bureau hosted part of the route for the 10th and final IAITC Bike Ride



Lin Warfel greeting Mark Gebhardts at ACTIVATOR



Ryan Whitehouse, Associate Director of National Legislation & Policy Development of Illinois Farm Bureau, speaking with Vince and Wanda Hock